

# MHL354

## TECHNICAL DATA

### SERVICE WEIGHT WITHOUT ATTACHMENT

MHL354 F	32–36.8t
----------	----------

### DIESEL ENGINES

	Stage IV / EPA Tier 4 final	COM III / EPA Tier III
<b>Manufacturer &amp; model</b>	Deutz TCD 6.1 L6	Deutz TCD 2013 L06 2V
<b>Type</b>	6-cylinder inline	6-cylinder inline
<b>Engine control</b>	EMR IV	EMR III
<b>Engine operation</b>	4-stroke diesel, common rail direct injection, turbocharger, controlled exhaust gas recirculation, diesel particulate filter with automatic regeneration and SCR-cat automatic regenerationcat	4-stroke diesel, common rail direct injection, turbo-charger with charge air cooling
<b>Power</b>	160 kW	148 kW
<b>Nominal speed</b>	2,000 rpm	2,000 rpm
<b>Displacement</b>	6,057 cm <sup>3</sup>	7,200 cm <sup>3</sup>
<b>Cooling system</b>	Combi-cooler (coolant/ charge air) with fan speed control system; optional reversing function	Combi-cooler (coolant/ charge air) with fan speed control system; optional reversing function
<b>Exhaust emission standard</b>	Stage IV/EPA Tier final	COM III and EPA Tier III
<b>Air filtration</b>	Two-stage filter with safety cartridge and pre-separator with discharge valve	Two-stage filter with safety valve
<b>Fuel tank</b>	315 l Diesel	315 l
<b>DEF tank</b>	32 l Ad Blue	—

### ELECTRICAL SYSTEM

<b>Alternator</b>	28 V / 100 A
<b>Voltage</b>	24 V
<b>Batteries</b>	2 × 12 V / 110 Ah / 750 A (in accordance with EN)
<b>Lights</b>	2 × H3 headlamps, turn indicators and tail lights
<b>Optional</b>	13 kW or 20 kW DC generator with controls and insulation monitoring, driven by V-belt direct from diesel engine

### HYDRAULIC SYSTEM

LINDE mobile hydraulic system with load limit control and fuelsaving power demand control. Separate hydraulic oil cooler, temperature-controlled fan speed

<b>Cooling system</b>	Separated cooler with fan speed control system; optional reversing function
<b>Hydraulic oil filter</b>	Integral return filter in oil tank for work hydraulics, with 3,000 operating hours service interval
<b>Max. pump flow</b>	2 × 330 l/min
<b>Max. pressure</b>	320 / 360 bar
<b>Hydraulic tank</b>	454 l usable tank capacity

### BRAKES

<b>Service brake</b>	Hydraulically activated single circuit brake system that works on all four pairs of wheels
<b>Parking brake</b>	Electro-hydraulically actuated spring-loaded disk brake on the front axle, works on both axles

### TRANSMISSION

Hydrostatic drive through infinitely variable axial piston motor with directly mounted travel brake valves, two-speed shift gear, 4-wheel drive

<b>Travel speed</b>	1st gear: max. 6 km/h 2nd gear: max. 20km/h
<b>Max. traction force</b>	1st gear: 135 kN 2nd gear: 35 kN
<b>Turning radius</b>	5.7 m

### SLEWING GEAR

<b>Slewing ring</b>	Internally toothed double-row ball ring gear
<b>Drive</b>	3-stage planetary gear with integrated multi-disc brake
<b>Swing speed</b>	Infinitely variable from 0–7 rpm
<b>Swing brake</b>	Electrically operated
<b>Swing torque</b>	80 kNm

### UNDERCARRIAGE

<b>Front axle</b>	Planetary drive axle with integrated drum brake, rigidly mounted, max. steering angle 29°
<b>Rear axle</b>	Planetary drive axle with integrated drum brake, selfaligning bearing with automatic oscillating lock, max. steering angle 29°
<b>Stabilization</b>	Support blade with integrated cylinder protection on side of oscillating axle
<b>Tires</b>	Pneumatic tires, 8-fold 10.00-20

### OPERATOR'S CAB

<b>Cab</b>	Sound-insulated; heat-insulating glass panoramic windows for optimum all-around view; windshield with pull-down sunblind that slides under the cab roof; viewing window on cab roof; sliding window in cab door, sliding door.
<b>Air-conditioning</b>	Automatic air-conditioning. Infinitely variable heating with 8-speed fan, 10 adjustable air nozzles, 3 defroster nozzles (hot water system).
<b>Operator's seat</b>	Air-cushioned high-comfort seat with integrated headrest, safety belt and lumbar support, seat heating with integrated a/c function optional. Seat position, seat inclination, seat cushion multi-adjustable relative to position of armrests and pilot control units, allowing comfortable operation.
<b>Monitoring</b>	Ergonomic layout; glare-free instrumentation. Multifunction display, automatic monitoring and recording of abnormal operating conditions (including all hydraulic oil filters, hydraulic oil temperature (cold / hot) – coolant temperature and charge air temperature – condition of cooling system, diesel particulate filter load), visual and audible warning indication with shutdown of pilot control/ engine power reduction. Diagnosis of individual sensors available via the multi-function display. Rear view camera and side view camera.
<b>Sound levels</b>	LW(A) = 101 dB(A) (guaranteed) in accordance with directive 2000/14 EC; max allowable under 2000/14 EC = 104 dB(A)

### OFFICIAL HOMOLOGATION

Certification in accordance with CE guidelines



## EQUIPMENT

ENGINE	Standard	Option
Charge air cooling	●	
Direct electronic fuel injection/common rail	●	
Automatic idle	●	
Engine preheating		●
Engine diagnostics interface	●	
System-controlled fan drive with fan speed monitoring	●	

UNDERCARRIAGE	Standard	Option
Support blade on side of oscillating axle; integrated cylinder protection	●	
All-wheel drive	●	
Rear axle oscillating lock	●	
Special paint		●
Drum brakes	●	
Toolbox, small	●	
Toolbox, large		●
Access	●	
Fenders	●	
Additional support blade		●

UPPERCARRIAGE	Standard	Option
Separate cooling systems (combi-cooler for engine and hydraulic oil cooler)	●	
Cooling system fan speeds controlled by operating parameters	●	
Fan drive reversing function		●
Lockable maintenance hatches, with gas struts	●	
Automatic central lubrication system	●	
Rear view camera	●	
Side view camera	●	
Travel alarm		●
Electric refuelling pump		●
Lighting protection		●
Special paint (customer paint work)		●
Cyclone prefilter		●

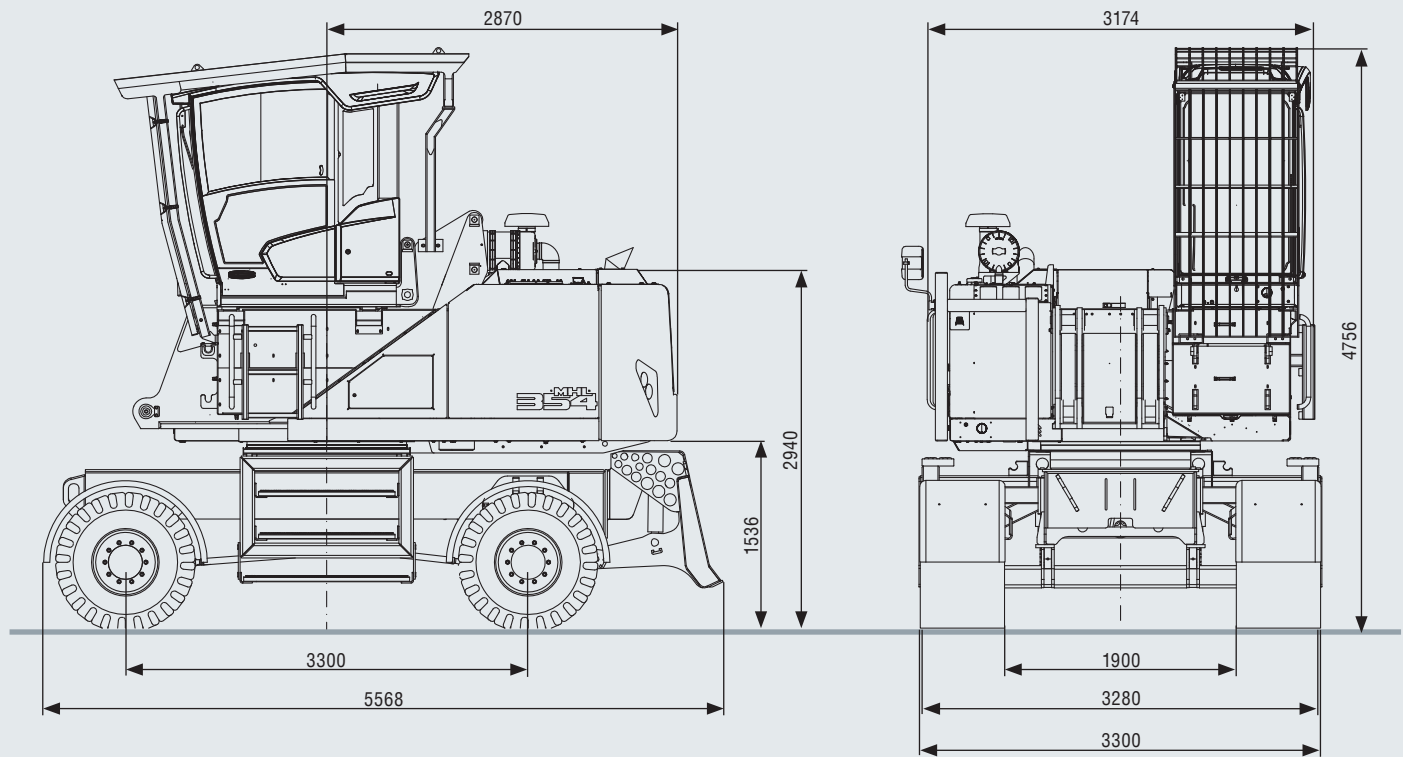
CAB	Standard	Option
3-layer glass with protection film	●	
Sliding window in cab door	●	
Glazed roof panel	●	
Reinforced glass (windscreen and roof panel)		●
Windshield washer system	●	
Roof washer system		●
Air-cushioned operator seat with headrest, seatbelt, and lumbar support	●	
Seat heating with integrated A/C function		●
Joystick steering	●	
Steering column, height and tilt adjustable		●
Automatic air conditioning system	●	
Independent heating system		●
Multi-function display	●	
Document clip	●	
Protective grilles to front and roof		●
12V transformer		●
Radio USB & Bluetooth	●	
12V socket	●	
Fire extinguisher, dry powder		●

EQUIPMENT	Standard	Option
Close proximity range limiter for dipperstick	●	
Coolant and hydraulic oil level monitoring system	●	
Filter system for attachments		●
Hose rupture valve for boom cylinder		●
Hose rupture valve for stick cylinder		●
Overload and work area control		●
Overload warning device		●
Quick coupling on dipperstick	●	
Dipperstick impact protection		●
Active cyclone prefilter (TOP AIR)		●
Hydraulic oil preheating 230 V		●
Float switch for barge unloading		●
Lubrication of the grab suspension by central lubrication system	●	
Light packages LED		●
LED front headlights	●	
Fuchs Telematics System		●

Further optional equipment available on request!

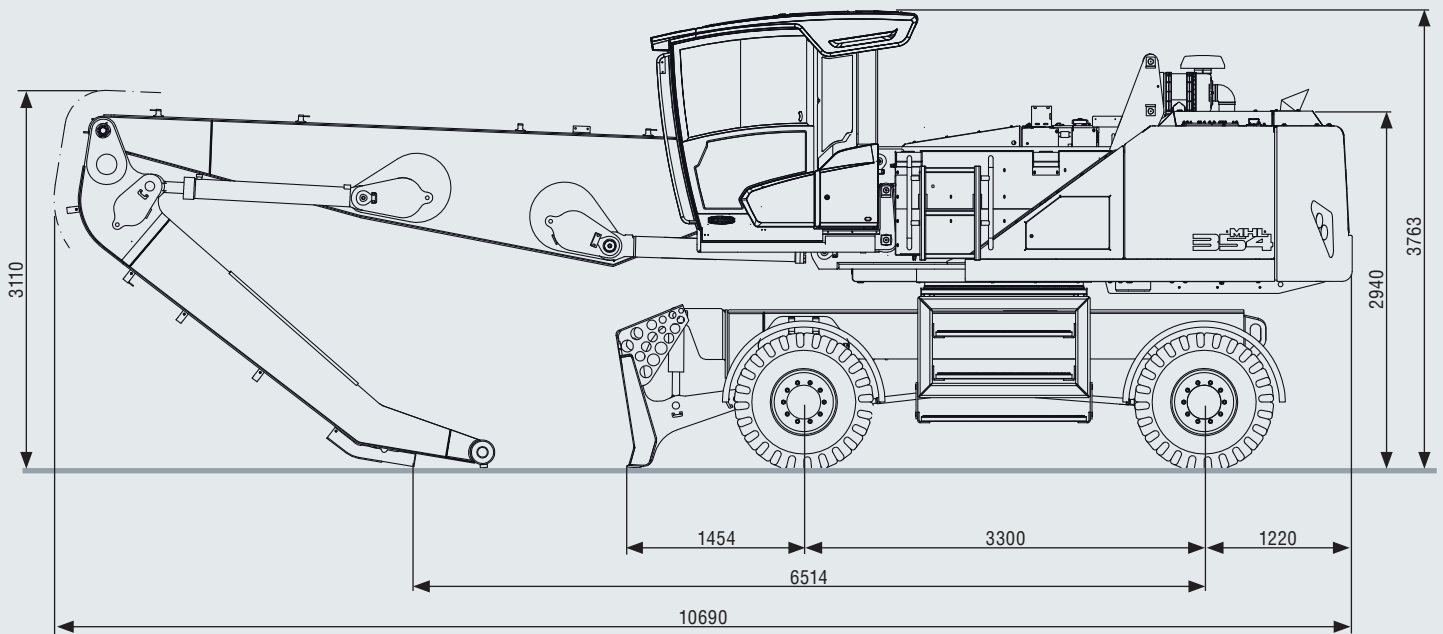
## DIMENSIONS MHL354

All dimensions in mm



## TRANSPORT DIMENSIONS MHL354

All dimensions in mm





# WORKING RANGE MHL354

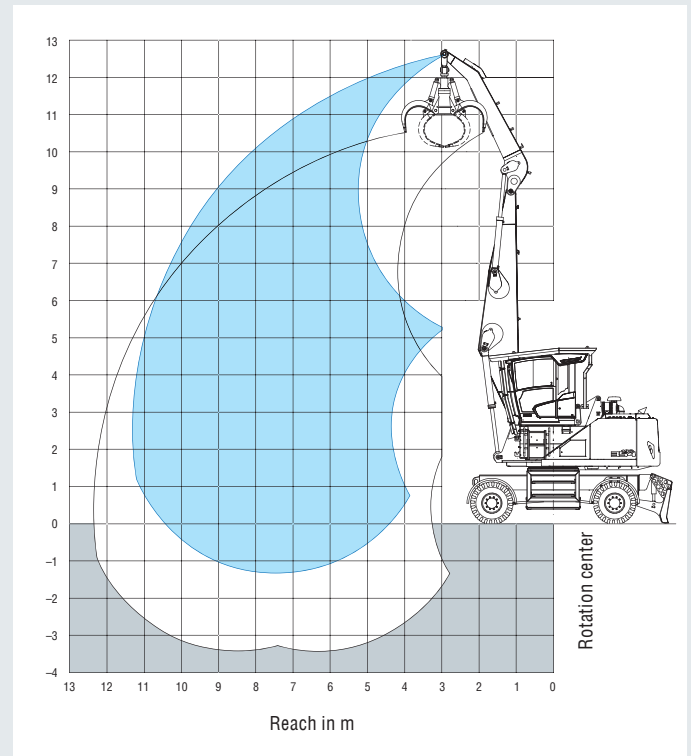
## REACH 11.3 M WITH DIPPER STICK

<b>Loading equipment</b>	Boom 6.4 m Dipper stick 4.1 m Multi-tine grapple
--------------------------	--

## RECOMMENDED ATTACHMENTS

<b>Grab size</b>	1.75–2.5 m <sup>2</sup> Depending on mission requirements
------------------	--

The lift capacity values are stated in metric tons (t). The pump pressure is 360 bar. In accordance with ISO 10567 the lift capacity values represents 75% of the static tipping loads or 87% of the hydraulic lifting force (marked °). On solid and level ground the values apply to a swing range of 360°. The (...) values apply in the longitudinal direction of the undercarriage. The values for "not supported" only apply via the steering axle or the locked oscillating axle. The weights of the attached load hoisting equipment (grab, load hooks, etc.) must be deducted from the lift capacity values. The working load of the lifting device must be observed. In accordance with EU Standard EN 474-5 for object handling applications hose rupture valves on the boom and stick cylinders, an overload warning device and the lift capacity table in the cab are required. For object handling application the machine has to be supported on a level ground.



# LIFTING CAPACITY MHL354

Height [m]	Undercarriage outrigger	Reach [m]					
		3.0	4.5	6	7.5	9	10.5
12	not supported		8.7° (8.7°) (8.7°)**				
10.5	not supported			8.6 (9.3°) (9.3°)**			
9	not supported			8.7 (10.8) (10.9°)**	6.1 (7.5) (8.3)**		
7.5	not supported			8.6 (10.7) (11.1°)**	6.1 (7.5) (8.2)**	4.5 (5.6) (6.2)**	
6	not supported		13.0 (14.8°) (14.8°)**	8.3 (10.4) (11.4°)**	5.9 (7.3) (8.1)**	4.5 (5.5) (6.1)**	3.5 (4.3) (4.8)**
4.5	not supported		12.0 (15.7) (17.2°)**	7.9 (9.9) (10.9°)**	5.7 (7.1) (7.8)**	4.4 (5.4) (6.0)**	3.5 (4.3) (4.8)**
3	not supported		11.0 (13.2°) (13.2°)**	7.4 (9.4) (10.4°)**	5.4 (6.8) (7.6°)**	4.2 (5.3) (5.9°)**	3.4 (4.2) (4.7°)**
1.5	not supported		6.2° (6.2°) (6.2°)**	7.0 (9.0) (10.0°)**	5.2 (6.6) (7.4°)**	4.1 (5.1) (5.7°)**	3.3 (4.2) (4.7°)**
0	not supported		6.7° (6.7°) (6.7°)**	6.9 (8.8) (9.8°)**	5.1 (6.5) (7.2°)**	4.0 (5.1) (5.7°)**	
							<b>Max. reach 11.3 m</b>
2.53	not supported						3.1 (3.8) (4.3)**