

PYLON-MOUNTED MACHINES

**Elevated and
conductive to
impressive views**

Pylons can be combined with standard undercarriages, heavy-duty machines, and crawler undercarriages as per our customers' requests. They provide a better line of sight into shredders and shears, minimize the risk of collisions in awkward spaces by giving operators a better view of their surroundings, make it possible to pile up higher stockpiles, and improve a machine's ability to load and unload ships with tall sides.

High above wharf walls

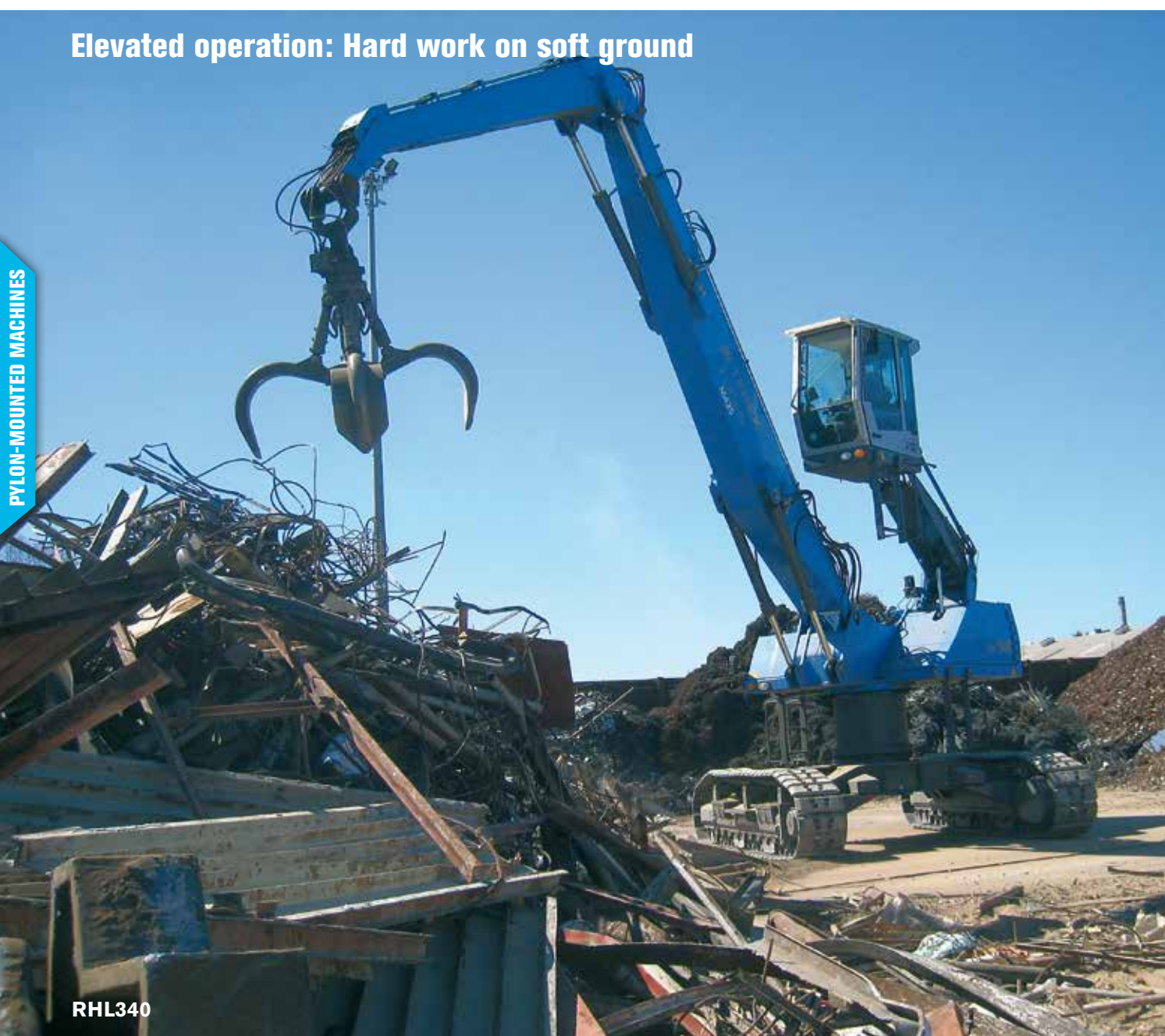
MHL380 XL

- ▶ **XL size and XL performance:** An operating weight of 78 tonnes, a maximum working radius of 22 meters, and a 12-litre, 273 kW diesel engine.
- ▶ **Fast and precise:** High-performance hydraulics combined with sensitive controls enable rapid, smooth maneuvers and precise positioning, even when handling heavy loads.
- ▶ **Rock-steady:** Outsize outrigger pads and solid engineering provide a guarantee of stability, even under extreme loading.
- ▶ **A higher perspective:** Because of the raised undercarriage, the eye-level can be up to 8.5 m high; and a glass floor in the cab provides the best possible view into railway wagons.
- ▶ **Climb on board:** Easy access via walkways and platforms – cab can be fitted with optional sliding door.
- ▶ **Safe and secure:** All walkways, steps and associated equipment are certified by the [Bau-Berufsgenossenschaft](#) (construction industry insurance association).
- ▶ **Comfort in the cab:** The ergonomic layout of the air-conditioned cab, with its useful storage compartments, clear plain-text display and intuitive joystick control, guarantees safe, fatigue-free working.





Elevated operation: Hard work on soft ground



PYLON-MOUNTED MACHINES

RHL340

Accessing new heights

MHL350

- ▶ **Elevated:** A pylon is installed between the undercarriage and superstructure, making it possible to work at an eye level of 6.5 m. This provides operators with a better line of sight when feeding scrap shears or loading high-wall containers with material.
- ▶ **High-flyer:** Materials being handled can be lifted further upwards and swung over and beyond obstacles. In addition, piling height limits are increased as well.
- ▶ **Clever linkage:** The superstructure's raised position enables the boom to be lowered further away than with the standard machine, benefitting the machine's linkage.
- ▶ **Proven features:** The machine's specifications – operating weight of 34 tonnes, reach of 16 m, and engine output of 148 kW – are the same as those of the standard MHL350 model. It also goes without saying that the standard unit's legendary robustness and durability characterize the special-purpose model as well.
- ▶ **Not just for one single customer:** Equipping the standard model with a pylon makes the MHL350 the ideal machine for a number of special requirements, which is why this special-purpose model is used by numerous scrap and recycling businesses throughout the world.

Towering workstation

MHL365

- ▶ **Top position:** In addition to the 1.4 m-high pylon, the cab is raised by an additional 0.5 m, providing an ideal view of the general area and an optimal line of sight into machines when feeding scrap shears (for example).
- ▶ **Ready to perform:** With a powerful 186 kW engine, an operating-weight of 56 tonnes, and a working radius of up to 18 m, the MHL365 is ideally suited to deal with large handling volumes at scrap yards and recycling centers.
- ▶ **Wide support:** The larger undercarriage provides for a high degree of stability even under large loads. Moreover, the fact that the undercarriage is the standard component belonging to the next larger model range means that spare parts can be quickly procured if necessary.
- ▶ **Practical assembly aids:** The clevises on the superstructure enable it to be quickly placed back on the undercarriage with the help of a crane after the 1.4-m pylon is transported as a separate module.
- ▶ **Flexible access:** The safe catwalk system (certified by the German Employer's Liability Insurance Association), which can be provided as a folding system upon request, does not make the machine any wider. This makes it easy to maneuver even when space is highly constrained.
- ▶ **Feels natural:** The intuitive joystick steering system makes it easy to carry out handling maneuvers quickly and with laser precision.

